



# DE1150PXHDCA3

DUAL PRESSURE \ DUAL CAPACITY \ TIER 3 \ PORTABLE COMPRESSOR



1150CFM/350PSI 900CFM/500PSI

# SPECIFICATIONS

## Compressor

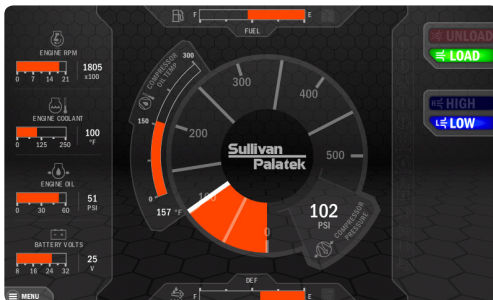
Model	DE1150PXHDCA3
Rated Delivery @ Rated Pressure	900 CFM @ 500 psi - 1150 CFM @ 350 psi 25.5 m3/min @ 34.5 bar - 32.6 m3/min @ 24.2 bar
Operating Pressure Range	250 psi (17.2 bar) - 500 psi (34.5 bar)
Estimated Weight, Serviced	19,500 lbs
Dimensions L x W x H (in")	254.31" x 90.15" x 111.82"

## Engine

Type	Diesel
Make & Model	CATERPILLER C15 ACERT Tier 3
Idle Speed	1400 RPM
Fuel Tank Capacity	200 gal (757 L)
Horsepower @ rated RPM	540 hp (403 kW)
Full Load Speed	2000 RPM



Sullivan-Palatek Electronic Controller (SPEC)



HOME SCREEN

## FEATURES

- » Two Stage 20/12 Air End
- » Dual Pressure 350/500 psi
- » Air End Manufactured by Sullivan-Palatek, Comes With Exclusive Two Year Warranty
- » Automatic 0 to 100% Capacity Control
- » 10" Closed Start, Inlet Valve
- » 3" Service Connection
- » Oil Level Sight Gauge
- » Caterpillar Engine
- » Steel Fuel Tank (TC Certified)
- » Four Point Lifting Bail
- » Dual Axle Running Gear
- » Electric Brakes
- » Adjustable 3" Lunette Eye
- » Noise Level Limited to Maximum of 76 dBA at 7 Meters
- » Automatic Shutdown and Protection System
- » Direct Drive
- » Containment Base
- » Large Service Doors for Easy Maintenance
- » Automatic Blowdown Valve
- » Dual Air Outlets (with After-cooler option)
- » Options
  - » Built in Aftercooler and Filters
  - » Hydraulic Brakes

## CONTROLLER

### Sullivan-Palatek Electronic Controller (SPEC)

Digital Readouts:

- Compressor temperature
- Discharge Pressure
- Engine oil pressure
- Engine Coolant temperature
- Voltmeter
- Tachometer
- Fuel level - low fuel warning and shutdown
- Complete engine diagnostic tool
- Unit converter
- Multilingual capabilities
- Waterproof IP66/67
- Air Filter Service
- After cooler filter warning

Sullivan-Palatek, Inc.

1201 West US Highway 20  
Michigan City, IN 46360

219.874.2497

sullivan-palatek.com

info@palatek.com