



# DE1150PXHDCU3

DUAL PRESSURE \ DUAL CAPACITY \ PORTABLE COMPRESSOR



1150CFM/350PSI 900CFM/500PSI

# SPECIFICATIONS

## Compressor

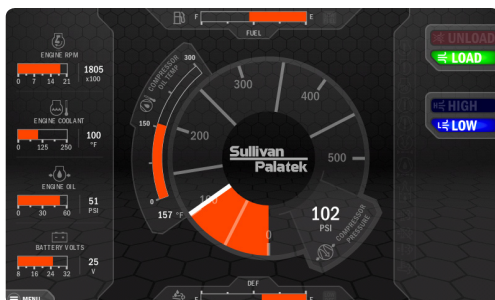
<b>Model</b>	<b>DE1150PXHDCU3</b>
Rated Delivery @ Rated Pressure	900 cfm @ 500 psi - 1150 cfm @ 350 psi 25.5 m3/min @ 34.5 bar - 32.6 m3/min @ 24.2 bar
Operating Pressure Range	250 psi (17.2 bar) - 500 psi (34.5 bar)
Estimated Weight, Serviced	19,500 lbs
Dimensions L x W x H (in")	254.31" x 90.15" x 111.82"

## Engine

<b>Type</b>	<b>Diesel</b>
Make & Model	CUMMINS QSX15
Idle Speed	1400 RPM
Fuel Tank Capacity	224 gal (848 L)
Horsepower @ rated RPM	535 HP (399 kW)
Full Load Speed	1900 RPM



### Sullivan-Palatek Electronic Controller (SPEC)



HOME SCREEN

## FEATURES

- Two Stage 20/12 Air End
- Dual Pressure 350/500 psi
- Air End Manufactured by Sullivan-Palatek, Comes With Exclusive Two Year Warranty
- Automatic 0 to 100% Capacity Control
- 8" Closed Start Inlet Valve
- 3" Service Connection
- Oil Level Sight Gauge
- Cummins Engine
- Steel Fuel Tank (TC Certified)
- Four Point Lifting Bail
- Dual Axle Running Gear
- Electric Brakes
- Adjustable 3" Lunette Eye
- Noise Level Limited to Maximum of 76 dBA at 7 Meters
- Automatic Shutdown and Protection System
- Direct Drive
- Containment Base
- Large Service Doors for Easy Maintenance
- Automatic Blowdown Valve
- Dual Air Outlets (with After-cooler option)

## CONTROLLER

### Sullivan-Palatek Electronic Controller (SPEC)

#### Digital Readouts:

- Compressor temperature
- Discharge Pressure
- Engine oil pressure
- Engine Coolant temperature
- Voltmeter
- Tachometer
- Fuel level - low fuel warning and shutdown
- Complete engine diagnostic tool
- Unit converter
- Multilingual capabilities
- Waterproof IP66/67
- Air Filter Service
- After cooler filter warning

**Sullivan-Palatek, Inc.**

1201 West US Highway 20  
Michigan City, IN 46360

219.874.2497    sullivan-palatek.com    info@palatek.com