



SULLIVAN PALATEK



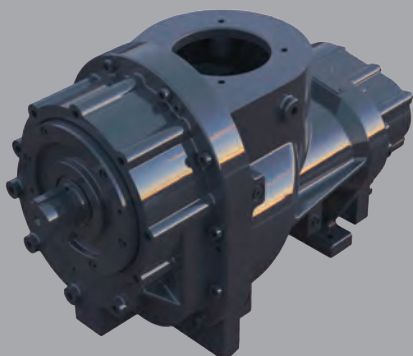
THE ALL NEW SP 13 40-60HP

- Power supply: 200-230/460V/3/60Hz
- Operating pressure: 100-175 psig
- Capacity: 135-280 acfm
- 40°C ambient package design
- 100% duty cycle
- NEMA Premium efficient TEFC motors
- Improved package design, reduces pressure loss and improves efficiency and performance
- Gear-driven drive train for reliability and limited maintenance



DEPENDABLE BY DESIGN

Reduced energy consumption and more capacity:



New optimized 130mm airend and package design that surpasses the DOE efficiency standards adopted by California, Colorado, Washington, and Vermont in 2022. (Federal adoption 2025)